



# School To Work

for Secondary Students  
with Disability

## Discover Micro Enterprise - Discovering Possibilities

*A career option to consider for  
people with disability*

Guest speaker Helen Neale from Community Living Project (CLP) in South Australia presented for CRU in October 2023. This **recording** of the event provides an informative presentation for those who are interested in this employment pathway or have an idea for their small business. Helen will speak about establishing a Micro Enterprise, why it can be a wonderful career option, and share stories about Enterprise Owners and their businesses.

### About the Presenter



**Helen Neale** works for community Living Project (CLP) in SA as the Project Lead of a 4-year ILC Grant called "Discover Micro Enterprise - Exploring Possibilities". Helens' son, Tom, owns a small business known as Ground Control by Major Tom. Helen is passionate about inspiring people with disability to have high expectations about careers and work.

### She will explain:

- What Micro Enterprise is and some examples of local Micro Enterprises
- The benefits of considering Micro Enterprises
- The principals which guide South Australia's Community Living Project's Micro Enterprise project
- Tips for using NDIS funding to set up a Micro Enterprise
- How to establish a Micro Enterprise

### Who should attend?

This session is open to people with disability and their family members and allies, including support coordinators, school staff, NDIA & LAC planners and service providers.

### About CRU

For over 35 years, Community Resource Unit has been working across Queensland to help people with disability take control of their lives and take their place in their community.

CRU (QLD), Resourcing Inclusive Communities, an initiative of Family Advocacy (NSW) and Imagine More (ACT) are working together on a four-year project called School To Work.

School To Work aims to inspire, increase confidence and motivate students with disability to seek and find meaningful employment with the help and support of their family and community.

**This webinar is fully subsidised as part of the Community Inclusion Capacity Development program through the Department of Social Services.**

### Community Resource Unit Ltd.

ABN: 16 143 460 250 ACN: 617 860 009

Level 2, 43 Peel Street

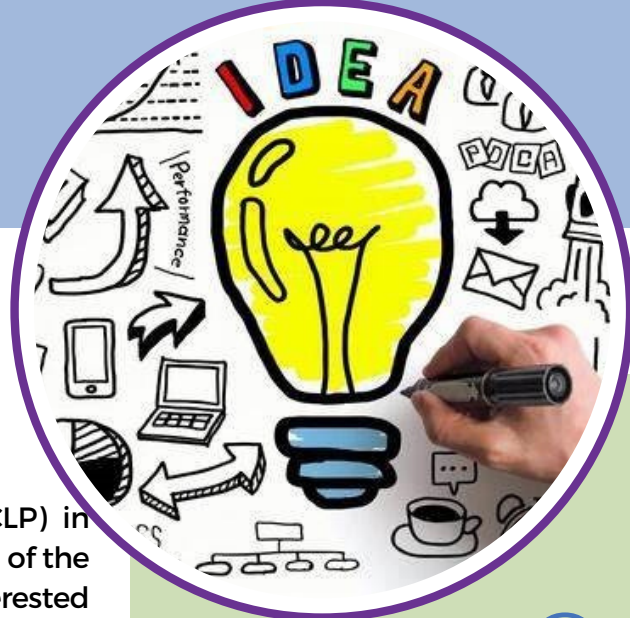
P.O. Box 3722

South Brisbane QLD 4101

Phone: (07) 3844 2211

Email: [cru@cru.org.au](mailto:cru@cru.org.au)

Web: [www.cru.org.au](http://www.cru.org.au)



## Webinar replay



### Date:

Tuesday 23rd April 2024

### Time:

1:00pm - 3:00pm

### Online

### RSVP:

Monday 22nd April 2024

**This is a FREE event  
but registration is  
essential.**



If unable to attend live, as long as you are registered you will receive the link to the recording to watch at a convenient time in the 7 days following the webinar.

Please contact CRU if you require assistance to register, attend or participate in this event.  
p. 07 3844 2211 or  
e. [cru@cru.org.au](mailto:cru@cru.org.au)

