



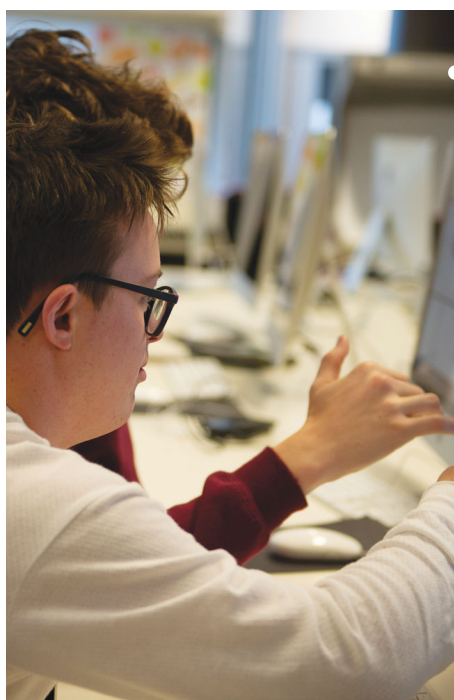
# Inclusive Education: Working Effectively with your Child's School

FRENCHVILLE SPORTS CLUB  
ROCKHAMPTON

Friday 6th November  
9:15AM - 2:30PM

Come along to a free workshop for parents of students with disability in state schools to learn about:

- Developing and using a positive vision to help your child meet their goals in school and in life
- Communication tips, advocacy skills, and building an effective relationship with your school
- What an inclusive education looks like, and how the Department's Inclusive Education Policy supports your child's school inclusion
- Overcoming challenges and who can help



These workshops are delivered by CRU to assist families of students with disability to be clear, informed, confident and connected so they can work as respected and valued partners in their children's education.

**To book your place or find out more  
go to [cru.org.au/events](http://cru.org.au/events)  
or call (07) 3844 2211**



Proudly supported by  
the Queensland Government  
through the  
Department of Education



**Queensland  
Government**

# Event Details

**DATE:** Friday 6th November, 2020

**TIME:** Sign in from 8:45AM for a 9:15AM start. Concludes at 2:30PM. Morning tea & lunch is provided.

**VENUE:** Frenchville Sports Club  
105 Clifton St, North Rockhampton, QLD 4710.

**BOOK:** Register by Thursday 29th October via this link [cru.org.au/families-for-inclusive-education](https://cru.org.au/families-for-inclusive-education) or contact CRU.

The venue will be operating under COVID-19 Safe Plans as required

## Who is CRU?

The Community Resource Unit Ltd. (CRU) has a 30 year track record of working throughout Queensland to promote positive change so that people with disabilities can belong to and participate in community life.

## Assistance to attend:

There is a small amount of funding available to families who need to travel to attend workshops or who require other support. If you require any assistance to attend or participate in this event please contact CRU to apply for this assistance.

For more information call CRU on (07) 384 4 2211 or email [cru@cru.org.au](mailto:cru@cru.org.au)



## Community Resource Unit Ltd.

ABN: 16 143 460 250 ACN: 617 860 009  
Level 2, 43 Peel Street  
P.O. Box 3722  
South Brisbane QLD 4101

**Phone:** (07) 3844 2211  
**Email:** [cru@cru.org.au](mailto:cru@cru.org.au)  
**Web:** [www.cru.org.au](http://www.cru.org.au)



Community  
Resource  
Unit Ltd.

Expanding Ideas; Creating Change