



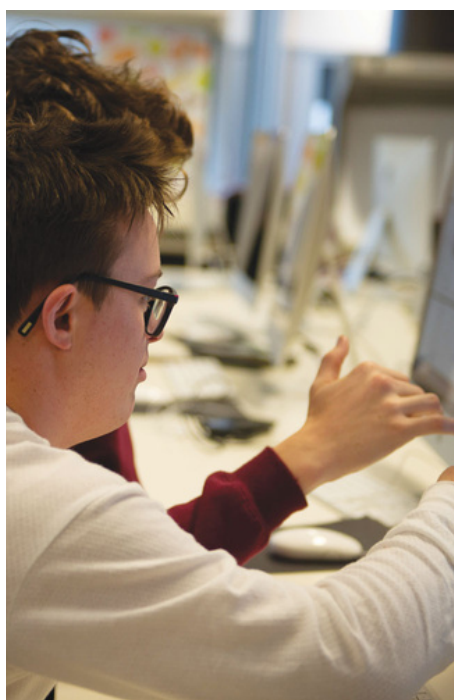
Inclusive Education: Working Effectively with your Child's School

BROTHERS SPORTS CLUB,
BUNDABERG

Friday 26th March, 2021
9:15AM - 2:30PM

Come along to a free workshop for parents of students with disability in state schools to learn about:

- Developing and using a positive vision to help your child meet their goals in school and in life
- Communication tips, advocacy skills, and building an effective relationship with your school
- What an inclusive education looks like, and how the Department's Inclusive Education Policy supports your child's school inclusion
- Overcoming challenges and who can help



These workshops are delivered by CRU to assist families of students with disability to be clear, informed, confident and connected so they can work as respected and valued partners in their children's education.

**To book your place or find out more
go to cru.org.au/events
or call (07) 3844 2211**



Proudly supported by
the Queensland Government
through the
Department of Education



**Queensland
Government**

Event Details

DATE: Friday 26th March, 2021

TIME: Sign in from 8:45AM for a 9:15AM start. Concludes at 2:30PM. Morning tea & lunch is provided.

VENUE: Brothers Sports Club
130 Takalvan St, Kensington QLD 4670.

BOOK: Register by Friday 19th March 2021 via this link cru.org.au/families-for-inclusive-education or contact CRU.

Who is CRU?

The Community Resource Unit Ltd. (CRU) has a 30 year track record of working throughout Queensland to promote positive change so that people with disabilities can belong to and participate in community life.

Assistance to attend:

There is a small amount of funding available to families who need to travel to attend workshops or who require other support. If you require any assistance to attend or participate in this event please contact CRU to apply for this assistance.

For more information call CRU on (07) 3844 2211 or email cru@cru.org.au



Community Resource Unit Ltd.

ABN: 16 143 460 250 ACN: 617 860 009
Level 2, 43 Peel Street
P.O. Box 3722
South Brisbane QLD 4101

Phone: (07) 3844 2211
Email: cru@cru.org.au
Web: www.cru.org.au



Community
Resource
Unit Ltd.

Expanding Ideas; Creating Change